

RP2040-PI ZERO

PicoMiteVGA MMBasic USB RP2040 Edition V6.00.02

OPTION SYSTEM I2C GP4,GP5

OPTION SDCARD GP21,GP18,GP19,GP20

OPTION SERIAL CONSOLE COM2,GP8,GP9

OPTION COLOURCODE ON

OPTION HEARTBEAT OFF

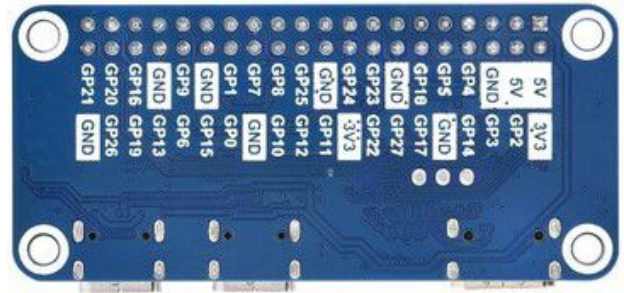
OPTION PICO OFF

OPTION KEYBOARD US

OPTION RESOLUTION 640X480 @ 252000KHZ

OPTION VGA PINS GP11,GP22

OPTION AUDIO I2S GP2,GP14 or GP6,GP10 (GP0-GP3 Free)



AUDIO: PCM5102A I2S DAC GP2=BCK, GP3=LCK, GP14=DIN, GND=SCK

VGA: HSYNCpin(2), BLUEpin(4) VGA(HVBGGR): GP11,GP12,GP22,GP23,GP24,GP25

I2C: RTC DS3231, LCD 2X16, 4X20, GAMEPAD

PicoMiteVGA USB

RP2040-PIZERO

PicoMiteVGA USB

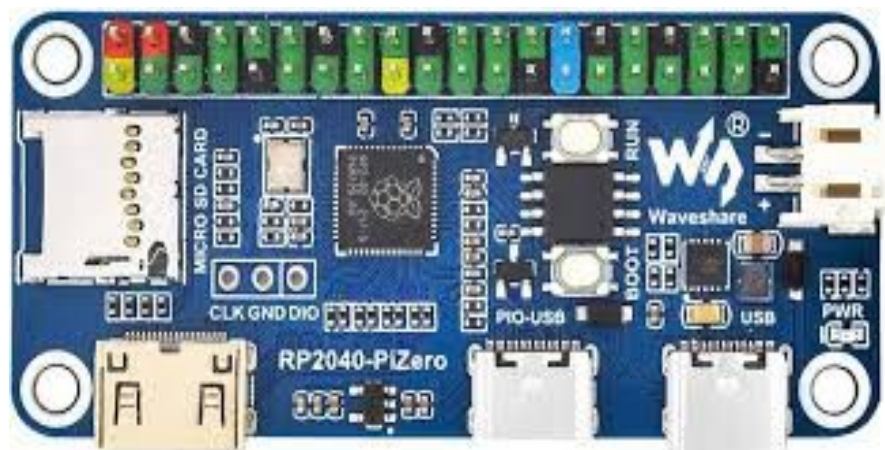
		GP-PIN			GP-PIN			GP-PIN			GP-PIN			GP-PIN		
		3V3			3V3			5V0			5V0			5V0		
BCK_I2S	DAC	GP02	SDA_DVI	GP02	001	020	5V0			5V0			5V0			5V0
LCK_I2S	DAC	GP03	SCL_DVI	GP03	003	040	5V0			5V0			5V0			5V0
DIN_I2S	DAC	GP14		GP14	007	080	GP04			GP04			GP04			GP04
		GND		GND	009	100	GP05			GP05			GP05			GP05
		GP17		GP17	011	120	GP18			GP18			GP18			GP18
		GP27	D0_N_DVI	GP27	013	140	GND			GND			GND			GND
BLUE	VGA	GP22	D2_P_DVI	GP22	015	160	GP23			GP23			GP23			GP23
		3V3		3V3	017	180	GP24			GP24			GP24			GP24
HSYNC	VGA	GP11		GP11	019	200	GND			GND			GND			GND
VSNC	VGA	GP12		GP12	021	220	GP25			GP25			GP25			GP25
		GP10		GP10	023	240	GP08			GP08			GP08			GP08
		GND		GND	025	260	GP07			GP07			GP07			GP07
		GP00		GP00	027	280	GP01			GP01			GP01			GP01
		GP15		GP15	029	300	GND			GND			GND			GND
		GP06		GP06	031	320	GP09			GP09			GP09			GP09
		GP13		GP13	033	340	GND			GND			GND			GND
MOSI_SD	SPI	GP19	MOSI_SD	GP19	035	360	GP16			GP16			GP16			GP16
		GP26	DO_P_DVI	GP26	037	380	GP20			GP20			GP20			GP20
		GND		GND	039	400	GP21			GP21			GP21			GP21

GP pins

SD-CARD
32GB Max.

RP2040-PIZero

Schematic: [hier](#)



DVI(HDMI) NOT CONNECT

KEYBOARD

5V POWER

Or this configuration where the first 8 pins are free.

PicoMiteVGA MMBasic USB RP2040 Edition V6.00.02RC23
Copyright 2011-2025 Geoff Graham
Copyright 2016-2025 Peter Mather

> OPTION LIST

PicoMiteVGA MMBasic USB RP2040 Edition V6.00.02RC23
OPTION SERIAL CONSOLE COM2,GP8,GP9
OPTION SYSTEM I2C GP16,GP17
OPTION COLOURCODE ON
OPTION KEYBOARD US
OPTION HEARTBEAT OFF
OPTION PICO OFF
OPTION RESOLUTION 640x480 @ 252000KHz
OPTION SDCARD GP21, GP18, GP19, GP20
OPTION VGA PINS GP11,GP22
OPTION AUDIO I2S GP13,GP15', ON PWM CHANNEL 6

> LIST PINS

GP0	1	OFF
GP1	2	OFF
GP2	4	OFF
GP3	5	OFF
GP4	6	OFF
GP5	7	OFF
GP6	9	OFF
GP7	10	OFF
GP8	11	Boot Reserved : CONSOLE TX
GP9	12	Boot Reserved : CONSOLE RX
GP10	14	OFF
GP11	15	Boot Reserved : VGA HSYNC
GP12	16	Boot Reserved : VGA VSYNC
GP13	17	Boot Reserved : I2S BCLK
GP14	19	Boot Reserved : I2S LRCK
GP15	20	Boot Reserved : I2S DATA
GP16	21	Boot Reserved : SYSTEM I2C SDA
GP17	22	Boot Reserved : SYSTEM I2C SCL
GP18	24	Boot Reserved : SPI SYSTEM CLK
GP19	25	Boot Reserved : SPI SYSTEM MOSI
GP20	26	Boot Reserved : SPI SYSTEM MISO
GP21	27	Boot Reserved : SD CS
GP22	29	Boot Reserved : VGA BLUE
GP23	41	Boot Reserved : VGA GREEN L
GP24	42	Boot Reserved : VGA GREEN H
GP25	43	Boot Reserved : VGA RED
GP26	31	OFF
GP27	32	OFF
GP28	34	OFF
GP29	44	OFF

> MEMORY

Program:

0K (0%) Program (0 lines)
100K (100%) Free

Saved Variables:

16K (100%) Free

RAM:

0K (0%) 0 Variables
0K (0%) General
126K (100%) Free