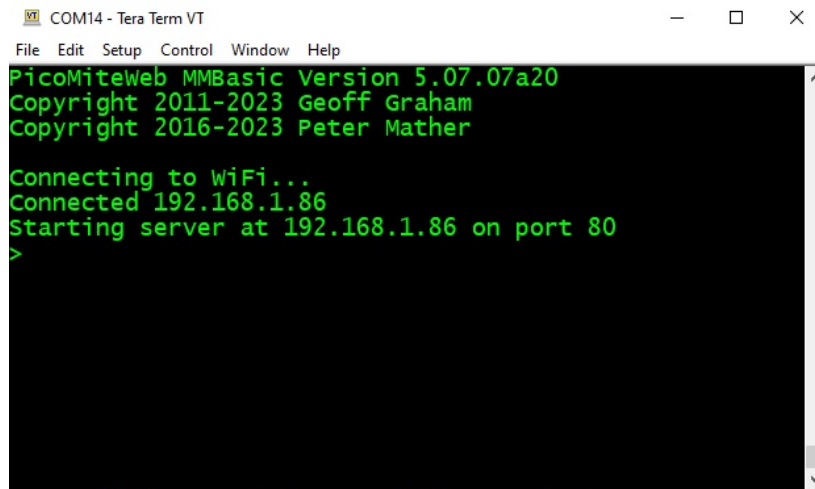


# PicoMite W network course

## Chapter 5

### 5.1 Getting your PicoMiteWeb's IP adress

In the past chapters we have discussed how to get the IP adress of your PicoMiteWeb. The IP adress is shown when the PicoMiteWeb is powered up.

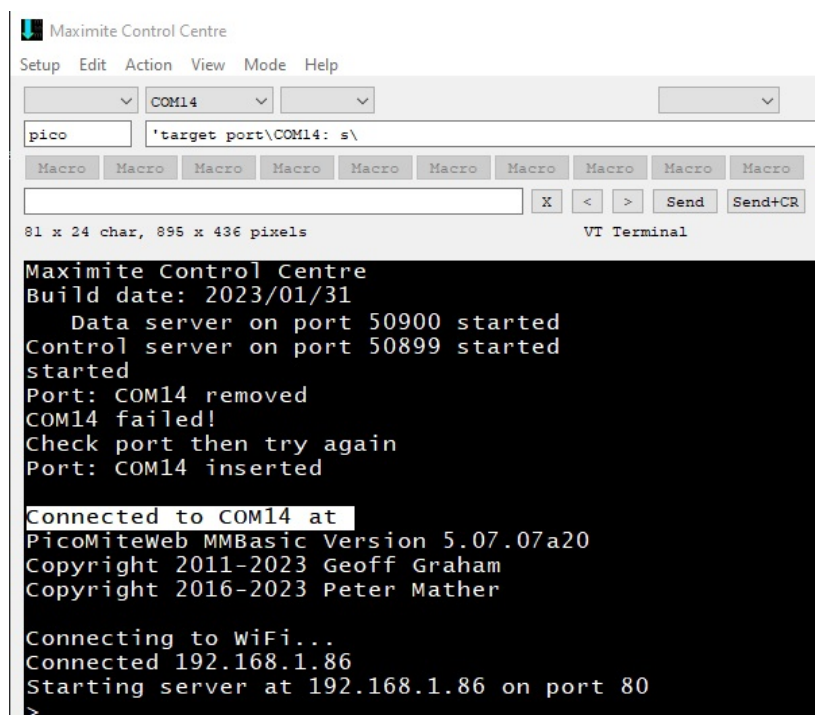


```
COM14 - Tera Term VT
File Edit Setup Control Window Help
PicoMiteWeb MMBasic Version 5.07.07a20
Copyright 2011-2023 Geoff Graham
Copyright 2016-2023 Peter Mather

Connecting to WiFi...
Connected 192.168.1.86
Starting server at 192.168.1.86 on port 80
>
```

If you are using Tera Term for the communication between your computer and PicoMiteWeb this program shows the IP number at the startup of your PicoMiteWeb.

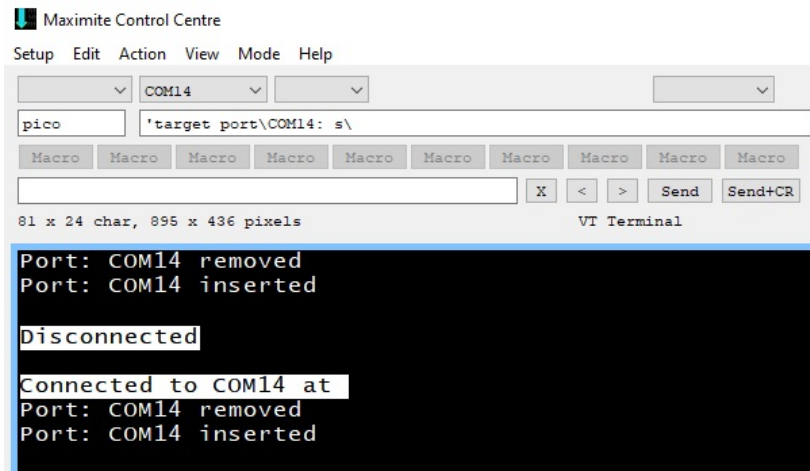
For writing programs and transferring files to the PicoMiteWeb MMEdit is however superior.



```
Maximite Control Centre
Setup Edit Action View Mode Help
COM14
pico 'target port\COM14: s\
Macro Macro Macro Macro Macro Macro Macro Macro Macro Macro
81 x 24 char, 896 x 436 pixels VT Terminal
Maximite Control Centre
Build date: 2023/01/31
Data server on port 50900 started
Control server on port 50899 started
started
Port: COM14 removed
COM14 failed!
Check port then try again
Port: COM14 inserted
Connected to COM14 at
PicoMiteWeb MMBasic Version 5.07.07a20
Copyright 2011-2023 Geoff Graham
Copyright 2016-2023 Peter Mather

Connecting to WiFi...
Connected 192.168.1.86
Starting server at 192.168.1.86 on port 80
>
```

MMEdit also shows the IP number when the PicoMiteWeb is powered up (or reset by a reset button). However it does not always shows the IP number.



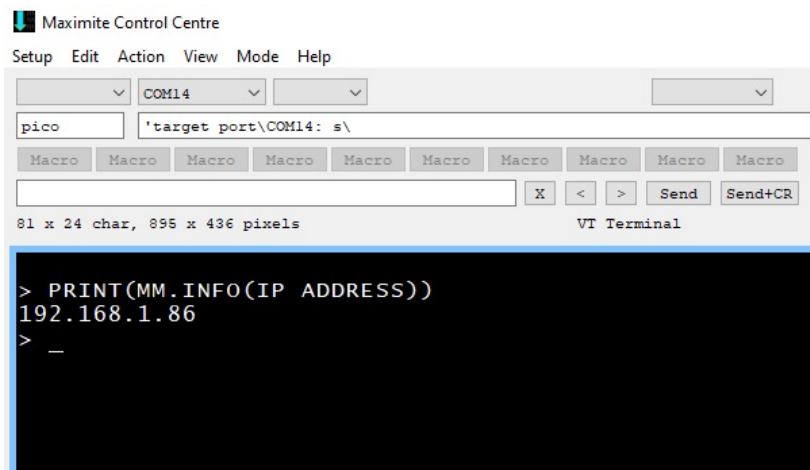
Sometimes there is a bit of a communication flaw at startup and you do not get to see the start information.

Connecting and disconnecting does not help.

In that case you can use a software command to get the IP Address. The command is:

**PRINT (MM. INFO (IP ADDRESS) )**

Please note that there is a space between IP and ADDRESS.



And there it is.

## 5.2 New TCP command for the webserver

Things evolve and often faster as the writer of this course notices. The developer of the PicoMiteWeb introduced a new command for starting the webserver. In the previous chapter we started the webserver as follows:

```
Do
  poll
Loop
```

and then we had a subroutine called poll

```
Sub poll
..
..
..
End Sub
```

The new command structure is as follows:

```
Do
  WEB tcp interrupt poll
Loop
```

```
Sub poll
..
..
..
End Sub
```

So basically poll has changed in **WEB tcp interrupt poll**.

According to Peter this is more robust as the previous version.  
And there

This is the only thing you need to change in the program from chapter 4.

For completeness I hereby give you the complete program from chapter 4 with some minor changes.

```
Dim buff%(512)
WEB ntp 1
PRINT
PRINT "Your IP address is : " + MM.Info(ip address)
```

```

Do
  WEB tcp interrupt poll
  randomnum = Int(Rnd(100)*100)
Loop

Sub poll
Local p%, t%
For a%=1 To MM.Info(MAX connections)
  LongString CLEAR buff%()
  WEB tcp READ a%,buff%()edit

  p%=LInStr(buff%(),"GET")
  t%=LInStr(buff%(),"HTTP")
  s$=""
  If (p%<>0) And (t%<>0) And (t%>p%) Then
    s%=LGetStr$(buff%(),p%,t%-p%+4)
    Print "String is ",s$
  EndIf
  If Instr(s$,"HTTP") Then
    Print "sending page"
    WEB transmit PAGE a%,"second.html"
  EndIf
Next a%
End Sub

```

I will highlight the changes here:

```

PRINT
PRINT "Your IP address is : " + MM.Info(ip address)

```

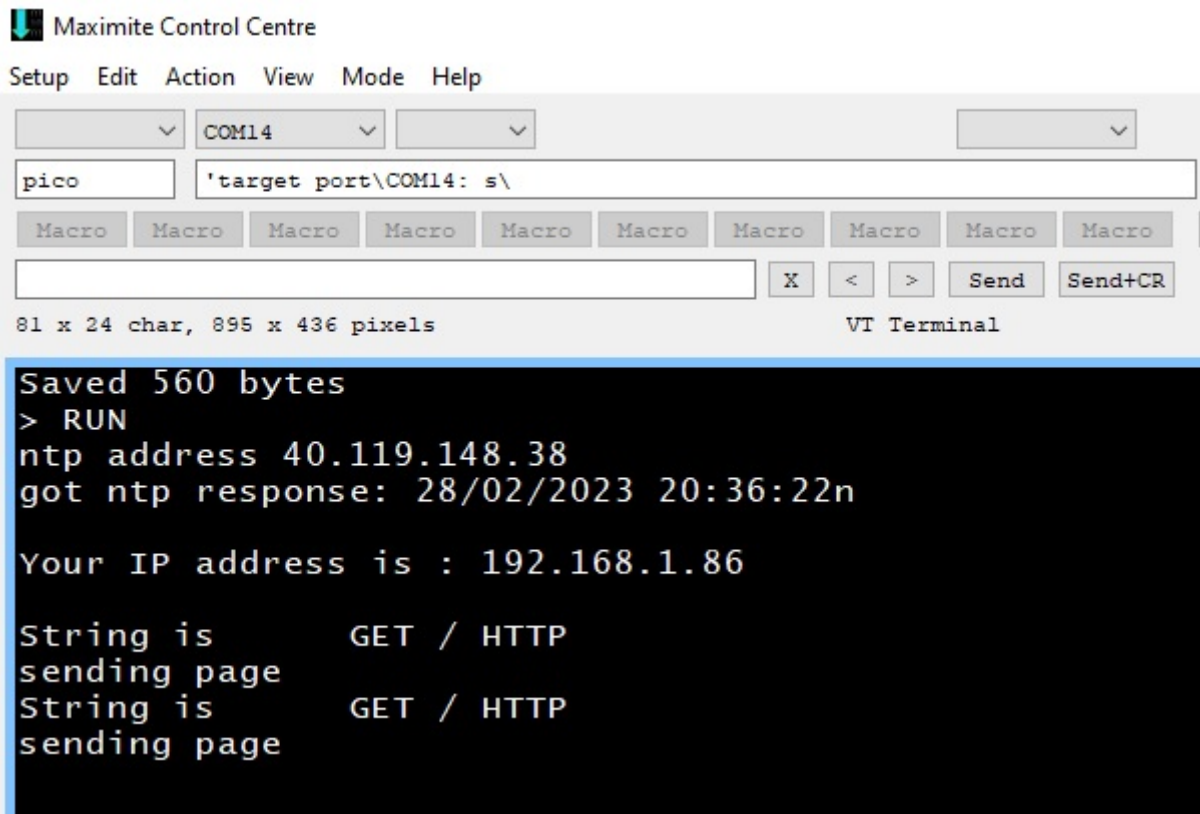
These lines are added so you will see the IP address in Tera Term or the Maximite Control Centre from MMEdit.

In the Do-Loop I omitted the print command that prints the randomnumber as that runs like mad over your console screen and makes the program more difficult to stop.

**WEB tcp interrupt poll**

This is the line that starts the webserver.

The name of the subroutine and the rest of the program is unchanged.



And this is how it looks when your program runs in MMEdit. You can clearly see the IP address so you can copy it and put in your browser to immediately see the webpage.