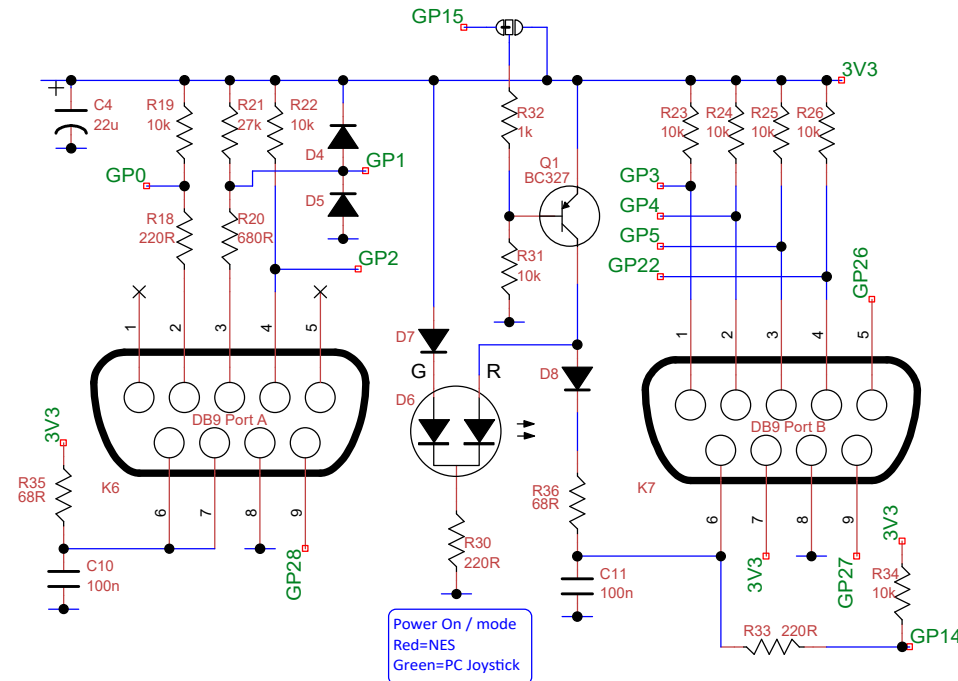
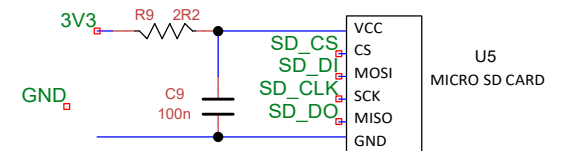
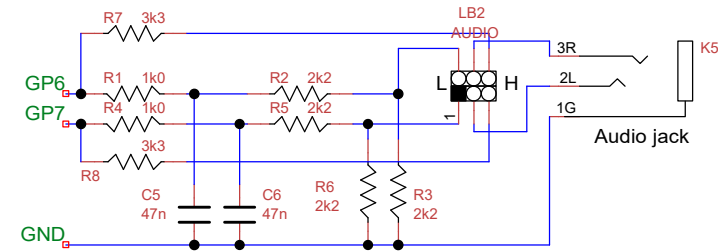
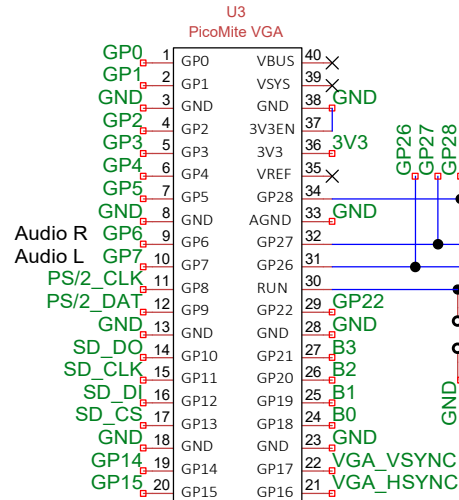
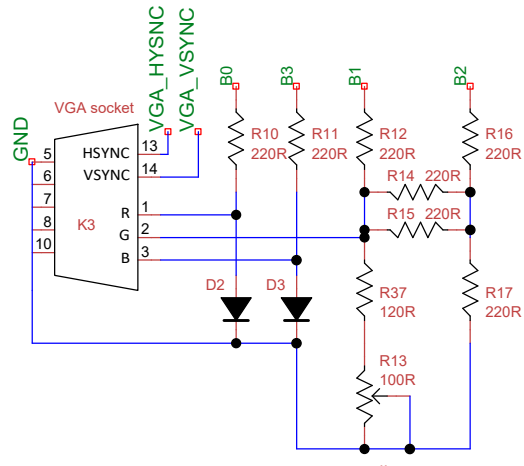
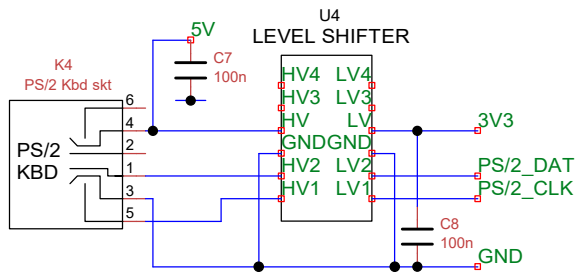


Note  
For higher voltage inputs voltage regulator  
U1, together with C1A and/or C1B are fitted.  
Values .voltage ratings to suit.



Note: Controller connections

K8 - LH socket - NES / Networking  
NES mode: 2=Data 3=Latch 4=Clock 6+= 8=GND (9=ADC2)  
Network mode: 2=COM1\_TX 3=COM1\_RX 8=GND

K7 - RH socket - NES / PC joystick  
NES mode: 2=Data 3=Latch 4=Clock 6+= 8=GND  
PC mode: 1=Up 2=Dn 3=Left 4=Right 6=Trig/Fire 7+= 8=GND  
6=ADC0 9=ADC1  
If JS1 is installed then VRx=GP27 VRy=GP26 SW-GP14  
Use in PC mode only.

Set GP15 High to use PC mode. Default is NES mode.

Title		
PicoGame NES		
Author		
Mixel90		
File		
E:\TinyCAD\PicoGameNES00.dsn		
Document		
Revision		
0.0		
Date		
22 Mar 22		
Sheets		
1 of 1		