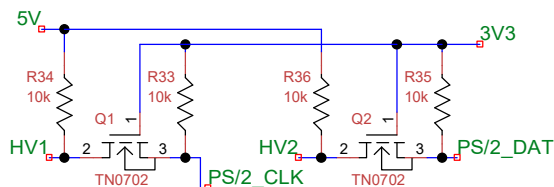
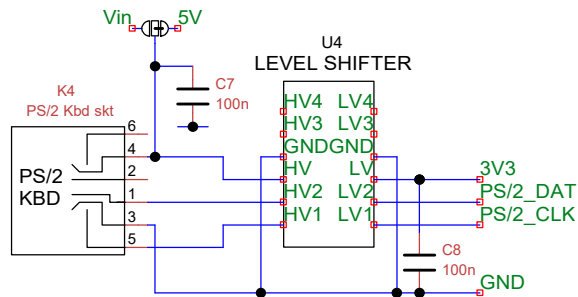
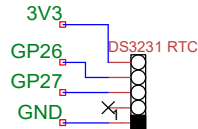
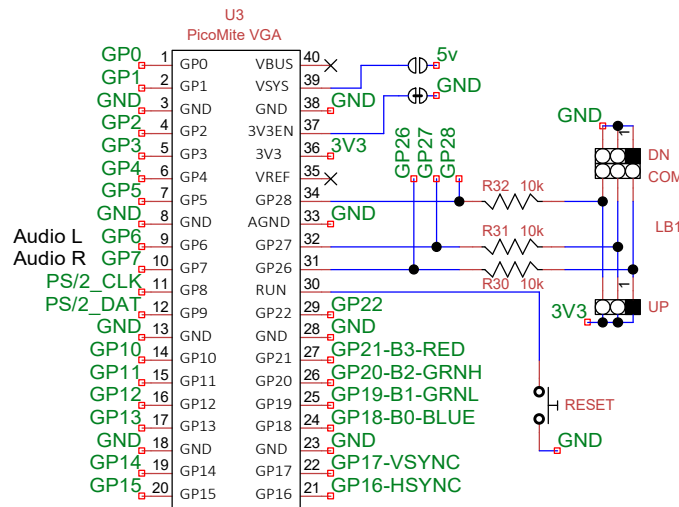
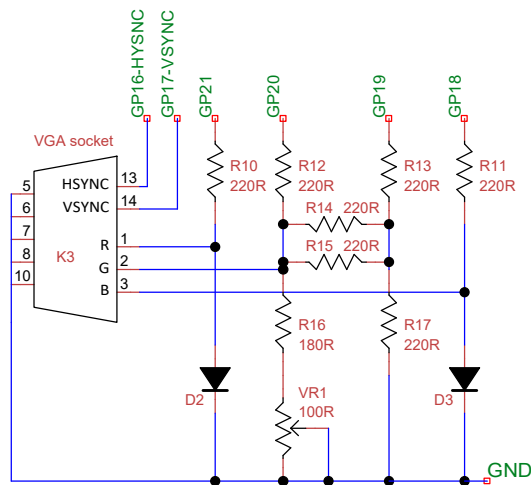


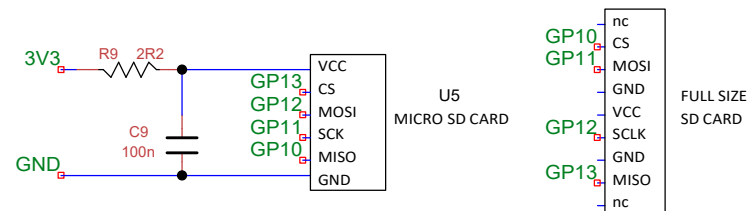
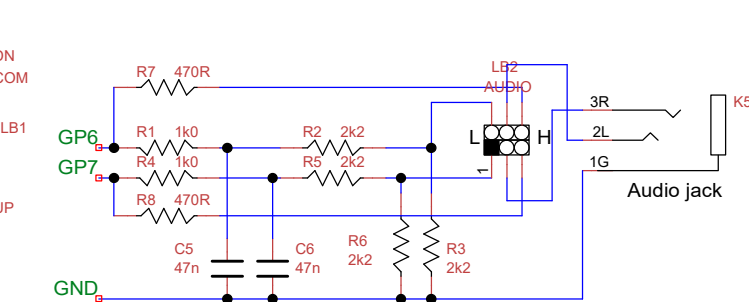
Note: For higher voltage inputs voltage regulator U1, together with C1A and/or C1B are fitted. Values and voltage ratings to



Note: Either the level shifter module U4 or the MOSFET circuit may be used here. Do not attempt to install both!



Note: Set LB1 to UP for GP26 and GP27. Can not be used if these are used for any other purpose.

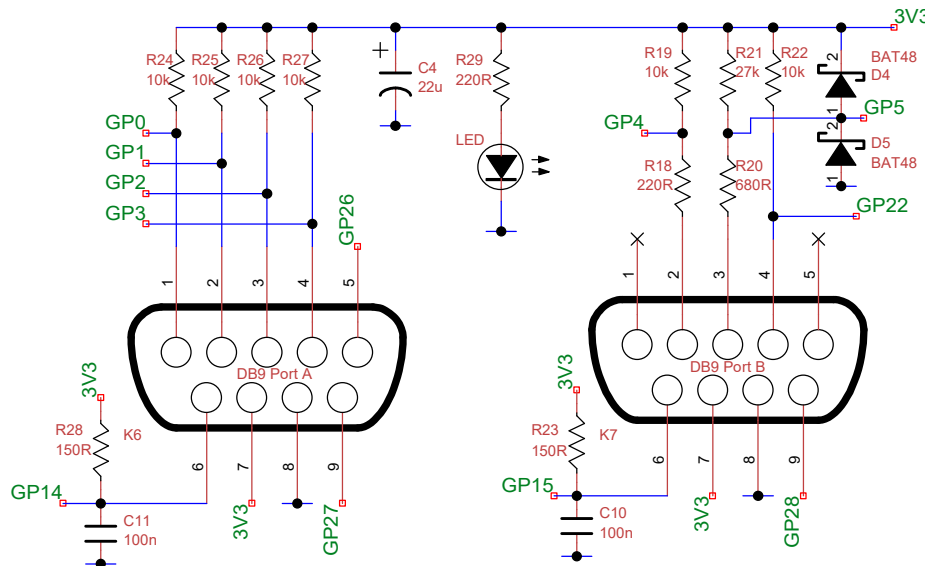


Note: Full size SD socket can be used as an alternative to the micro SD card module. If it is used then change C9 to a 100uF 10V electrolytic type. The PCB is designed to take either.

Note: Controller connections
K6 - LH socket A - Controller / PC joystick
Controller mode: 2=Data 3=Latch 4=Clock 6=+ 8=GND
PC mode: 1=Up 2=Dn 3=Left 4=Right 6=Trig/Fire 7=+ 8=GND
5=ADC0 9=ADC1

If JS1 is installed then it replaces Port A
VRx=GP26 VRY=GP27 SW=GP14

K7 - RH socket B - Controller / Networking
Controller mode: 2=Data 3=Latch 4=Clock 6=+ 8=GND (9=ADC0)
Network mode: 2=COM2_TX 3=COM2_RX 8=GND



Title		
PicoGame NES Version 1.4		
Author		
Mixel90		
File		
E:\PicoGAME 14\PicoGameNES14.dsn		
Document		
Revision		
0		
Date		
26 Apr 22		
Sheets		
1 of 1		