

# Lead Carbon Bank 6v Cell Monitor and Balancer

Ver 2.002.1, Mike Scaife, RM Software, Wellington

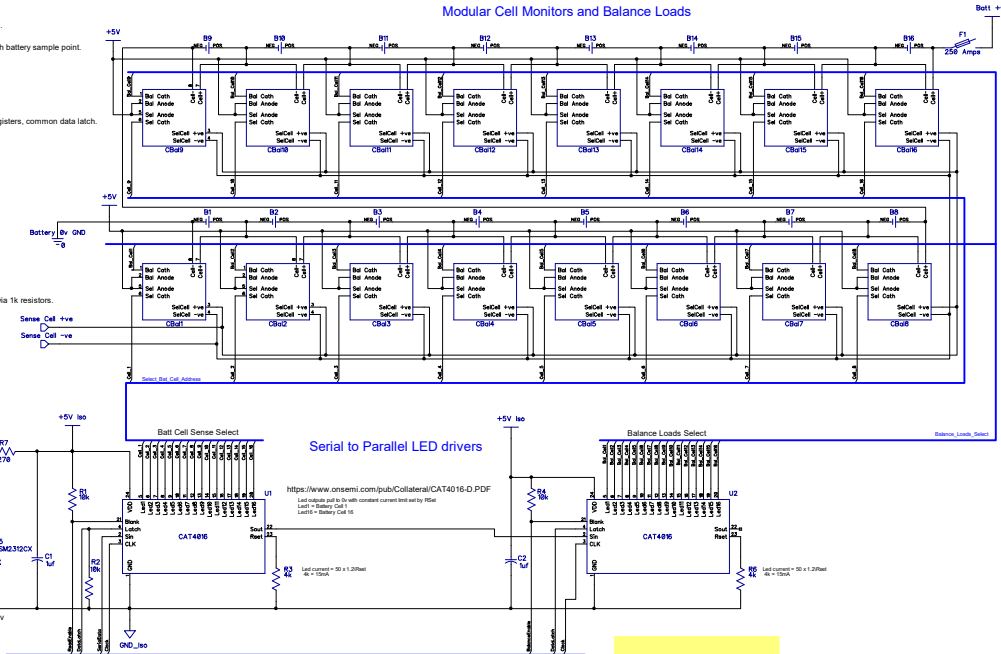
Lead Carbon Bank has 8 series x 6v for 50v rail.  
16 cells used on LifePo4 bank.  
Not shown: All Cell+ sense wires fused at each battery sample point.  
Balance load = 3.5 amps per cell.

### Last Change:

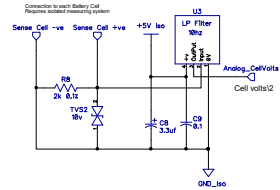
12 Jan 2019, Initial design  
18 Jan 2019, Cell Calibration Added  
25 Jan 2019, Combined serial read and load shift registers, common data latch.  
3rd Feb 2019, Complete

5 and 12v rails isolated from main bank.  
cell sense wires connect direct to any selected cell via 1k resistors.  
1/2 battery voltage selected by 0.1% divider resistors

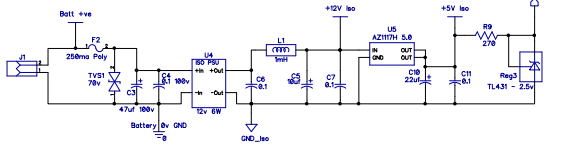
## Modular Cell Monitors and Balance Loads



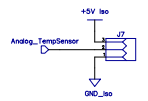
## Selected Cell Voltage Noise Filter



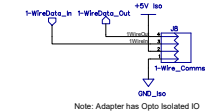
## Isolated DC Power



## Temperature Sensor Module

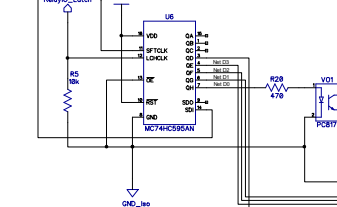


## 1-Wire network adapter Module



Typically shift lowest bit of byte first, so it ends up in GH

## Relay Outputs



## Isolated External Alarms and Relays

