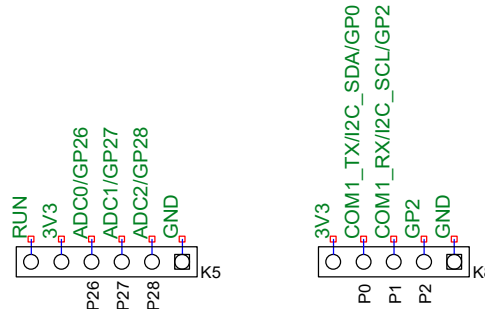
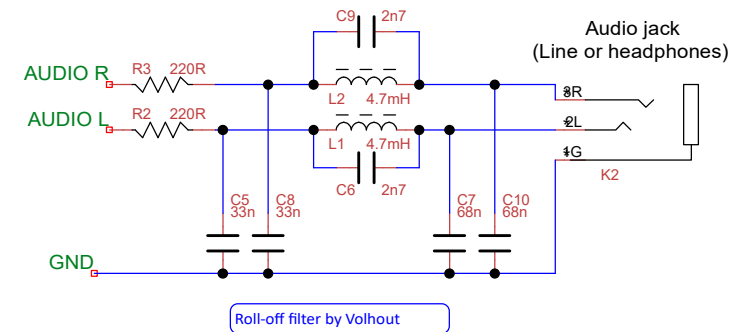
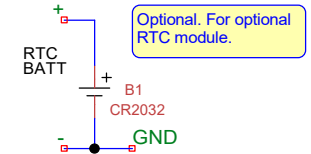
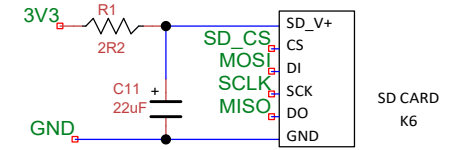
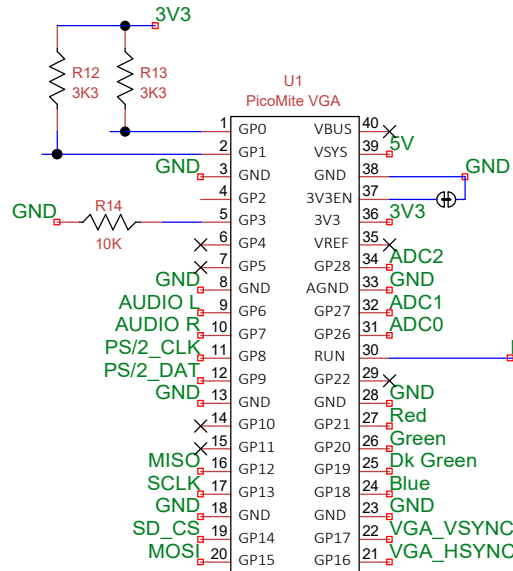
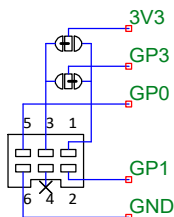


Links shown for original Wii Classic controller, which has pins 1 and 3 linked at the controller. GP3 is an optional Device Detect signal.

NINTENDO WII
CONTROLLER
CONNECTOR

(LOOKING INTO PLUG)



EXPANSION PORTS

K5 connections are
uncommitted.

If male header pins are fitted on
the "REAR" of the PCB a small
RTC module can be fitted on K8

Title PicoMite VGA Basic Version 2		
Author Mixel90		
MMBasic by Geoff Graham + Peter Mather		
File Z:\Computing\0 ... PicoMite VGA Basic V2 .dsn	Document	
Revision 1.0	Date 9th November 2023	Sheets 1 of 1