

PoweredNut Modular Charger V1.0

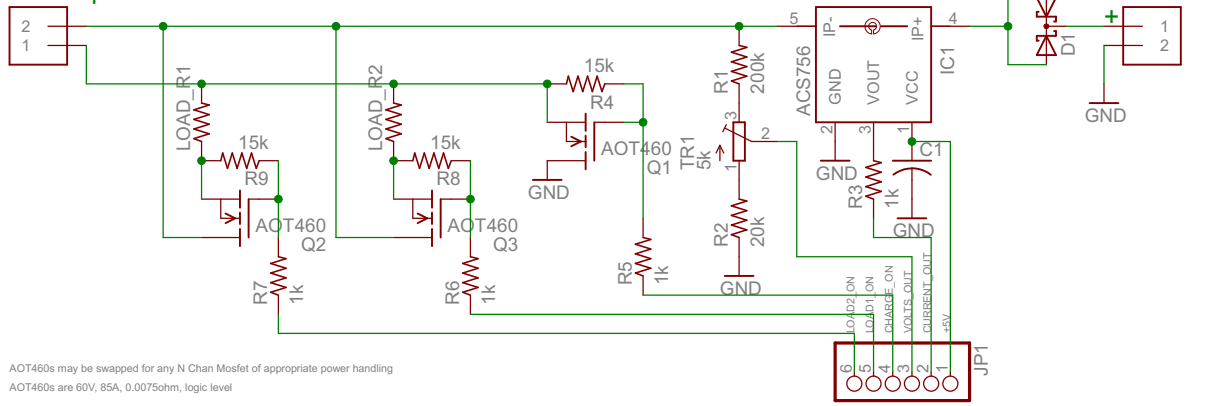
Generic Solar charger module

Max output as shown is 400W (requires heat sinking)
 For higher outputs connect additional mosfets in parallel (Q1, Q2, Q3)
 Note: include the 15k and 1k resistors to Gate
 Absolute Max is dictated by the ACS756 (100Amps max current)

For 48 Volt systems R1 & R2 must be changed to 220k and 10k
 For higher voltage systems R1 TR1 and R2 must output in the range 0-4.096 Volts
 I typically use a math easy output i.e 1/10th or 1/20th input voltage
 For 12V or 24V operation adjust TR1 to give 1/10th input voltage

Power Source

Load Section (Q2,Q3,Load R1&2 R6,R7) may be omitted if not required/desired



AOT460s may be swapped for any N Chan Mosfet of appropriate power handling
 AOT460s are 60V, 85A, 0.0075ohm, logic level

Public Domain Material - free to copy, sell, re-use, whatever. No attribution required.
 2011 Powered Nut