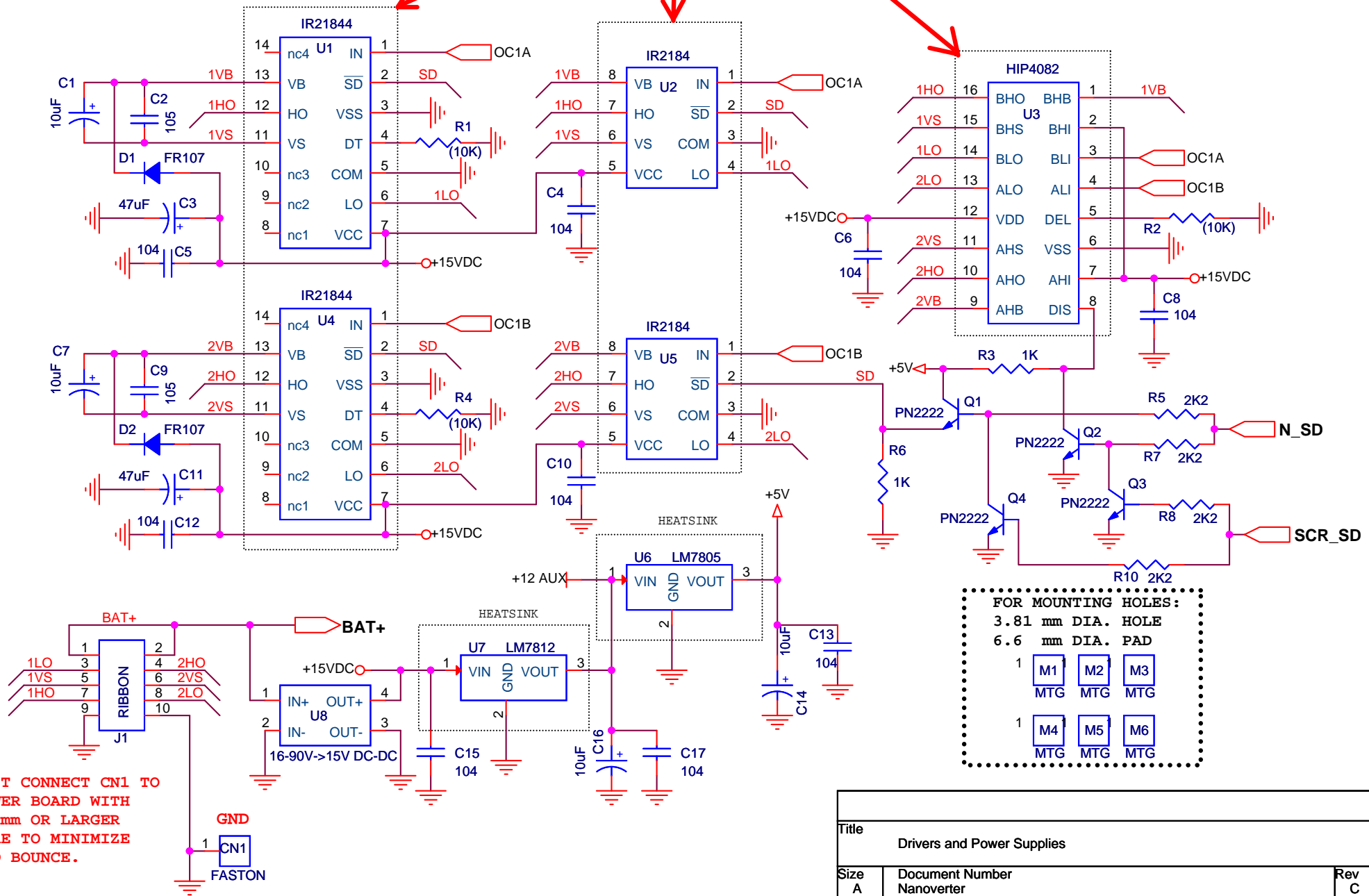


CHOOSE YOUR POISON.  
CAUTION: MORE THAN ONE CAN KILL!



Title  
Drivers and Power Supplies

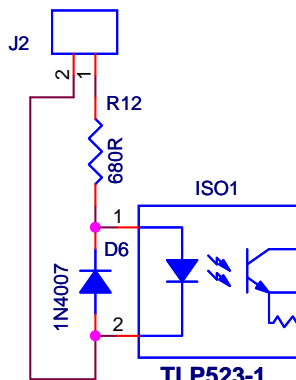
Size  
A Document Number  
Nanoverter

Rev  
C

Date: Thursday, May 02, 2019

Sheet 1 of 3

# 12VAC EXTERNAL XFMR



**TLP523-1**  
USING DIP-8  
SOCKET  
TLP523-2 MAY  
ALSO BE USED.

**SYNCED\_SIG**

JUMPER  
JP1  
SYNC DISA.

+12 AUX

GRN

LOCATE FOR  
SHORTEST  
CONNECTION  
TO U1 PINS.

H = RUN

**N\_SD**

**SCR\_SD\_N**

H = RUN

**ST\_SP\_SIG**

**ST\_SP\_SW**

SPST TOGGLE.  
USE ONLY  
IF NANO2 IS  
ABSENT.

**CT**  
CURRENT  
XFORMER

**AC\_I**

**SCR\_SD**

**SCR\_SD\_N**

**VFB ADJ**

**VSAMP**

**VSAMP TO NANO2 PIN 19**

**VSAMP**

**VSAMP**

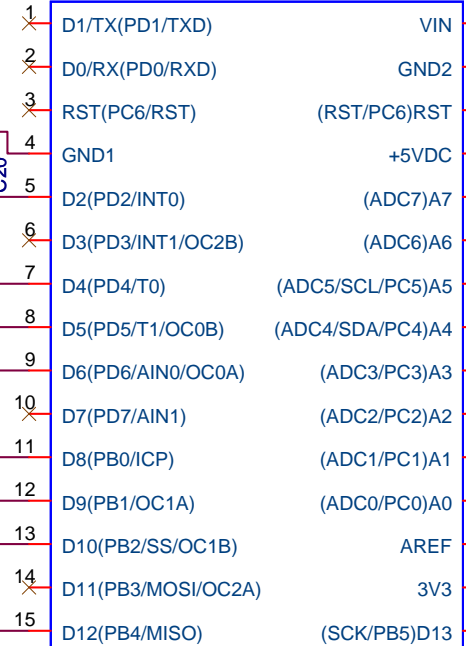
**VSAMP**

**VSAMP**

**VSAMP**

**ArduinoNano**

NANO1



+5V

**R16**

10R

**C21**

10uF

**C22**

105

**VSAMP**

FOR  
OPTIONAL  
CODE  
SUPPORT

+5V

**C23**

105

**C24**

10uF

**C29**

105

**C26**

105

**C27**

105

**C28**

104

**C25**

22nF

INVERTER OUTPUT  
STEP-DOWN  
TRANSFORMER

**12VAC VFB**

Title		
Nano1 - SPWM Generator, External Sync and Shutdown		
Size	Document Number	Rev
A	NANOVERTER	C
Date:	Thursday, May 02, 2019	Sheet 2 of 3

